

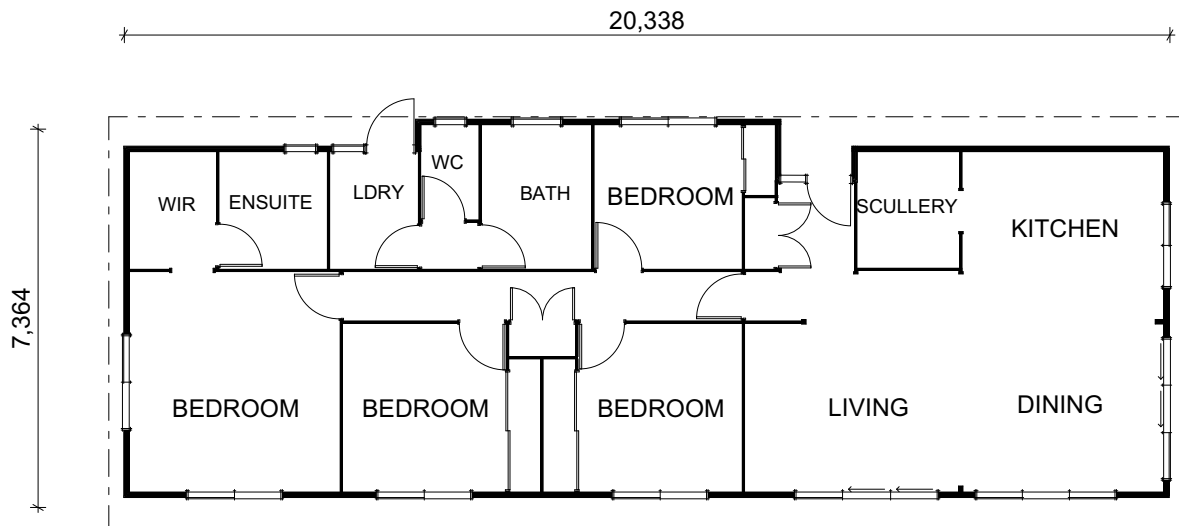


Artist Impression Only

Riverview Trussed

142m²

 4 Bedrooms
  1 Living area
  2 Bathrooms
 Walk in Pantry
 WIR
 Separate Laundry



The four bedroom Riverview packs a whole lot into a 142m² footprint, including generous bedrooms, two bathrooms, scullery and walk-in-wardrobe. The bedrooms in the Riverview are at one end of the home, separating the living and sleeping areas for ultimate peace and quiet. This cost-effective version of the Riverview plan features a trussed gable roofline and painted ceilings. You have the option to upgrade to high raking timber ceilings.

Talk to our team about a Riverview for your site today!
 Phone 0508 562 596 | Email info@lockwood.co.nz
www.lockwoodreadybuilt.co.nz

ReadyBuilt
 by  LOCKWOOD



Riverview Trussed

142m²

 4 Bedrooms  1 Living area  2 Bathrooms Walk in Pantry WIR Separate Laundry

ReadyBuilt homes include

- Kitchen cabinetry
- Bathroom fittings plumbed to floor
- F&P appliances including cooktop, oven, rangehood & dishwasher
- Pre consent plans (required for site specific consent)
- Double glazed thermally broken windows and doors
- Ceiling, wall and under floor insulation
- LED lighting
- High quality fitted carpet and vinyl
- Internal and external painting and finishing

Exclusions

Decking, window coverings, site works, service connections and local authority consents, hot water heating, and transport are not included in the pricing for your ReadyBuilt home.

Although these items are excluded from standard supply, they can be quoted and supplied on request. We are also able to assist in obtaining site consents and engineering if required.

Contact us for a full list of specifications and how we can assist.

Pricing includes GST and is valid for the North Island only until 1/12/2025 and is subject to change

Talk to the ReadyBuilt team about a Riverview for your site today!

Phone 0508 562 596 | Email info@lockwood.co.nz
www.lockwoodreadybuilt.co.nz

ReadyBuilt
by  **LOCKWOOD**