

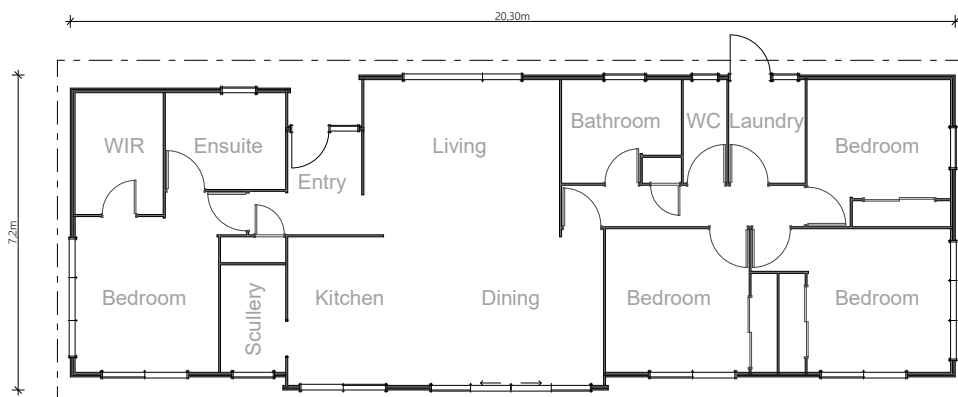


Artists Impression  
Accessories not included

# Homestead Kitset

140m<sup>2</sup>

 4 Bedrooms  
  1 Living area  
  2 Bathrooms  
 Walk in Pantry  
 WIR  
 Separate Laundry



You'll be amazed at what we packed into 140m<sup>2</sup> in this four bedroom design! Open, bright and boasting a separate master with en-suite and walk in robe, this contemporary plan has everything you'd expect from a family home. A private master oasis, three additional generous bedrooms, a scullery, separate laundry, WC and large main bathroom make this design perfect for a busy household. An excellent option for a rural or urban environment, this home is just waiting for a growing family to make it their new Homestead.

Talk to the Kitset team about a Homestead for your site today!

Phone 0508 562 596 | Email [info@lockwood.co.nz](mailto:info@lockwood.co.nz)  
[lockwoodreadybuilt.co.nz/kitset](http://lockwoodreadybuilt.co.nz/kitset)





Artists Impression  
Accessories not included

# Homestead Kitset

140m<sup>2</sup>

 4 Bedrooms
  1 Living area
  2 Bathrooms
 Walk in Pantry
 WIR
 Separate Laundry

## Inclusions

- Insulated exterior Walls
- Thermally broken windows and doors
- Interior Walls, doors, wardrobes and cupboards
- Suspended timber subfloor
- Roof framing timbers
- Sarked timber ceilings
- Full building plans for site-specific consent
- Allowance for preparation site-specific consents

## Exclusions

When you order a kitset from Lockwood, there are a number of items that aren't included in the advertised price. These include but are not limited to:

- Any building processes required to construct the home
- Kitchen, bathroom and laundry fixtures
- Drapes and floor coverings
- Under floor and roof insulation
- Sealants/glues, floor nails / product nails, screws
- Electrical fixtures, electrical wiring
- Plumbing fixtures and fittings
- Roofing, gutters and downpipes
- Wet wall linings (Acrylic / Tiles to Bath/Shower and associated finishing materials)
- Site work materials (including concrete, reinforcing, service connections, house piles and bearer kits)
- BCA fees for site consents
- Site specific engineering where required for consent
- Freight

Talk to us for a full list of inclusions and exclusions.

Talk to the Kitset team about a Homestead for your site today!

Phone 0508 562 596 | Email [info@lockwood.co.nz](mailto:info@lockwood.co.nz)  
[lockwoodreadybuilt.co.nz/kitset](http://lockwoodreadybuilt.co.nz/kitset)

