

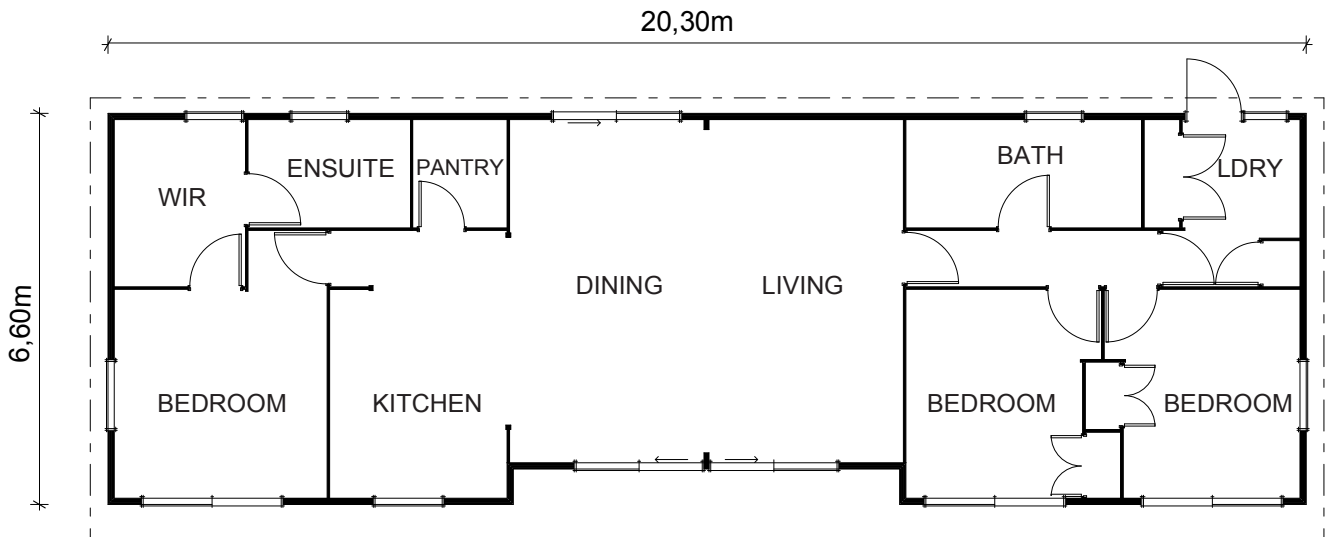


Accessories and Pergola not included

Lifestyler Kitset

131m²

 3 Bedrooms
  1 Living area
  2 Bathrooms
 Walk in Pantry
 Large WIR
 Separate Laundry



The Lifestyler is a well proportioned family home with three bedrooms, a separate scullery and laundry. The main bedroom, ensuite and walk-in-robe are set off from the kitchen and, through clever design, create a generous private space, tucked away from the main living area and other bedrooms.

Talk to the Kitset team about a Lifestyler for your site today!

Phone 0508 562 596 | Email info@lockwood.co.nz
lockwoodreadybuilt.co.nz/kitset





Lifestyler Kitset

131m²

 3 Bedrooms  1 Living area  2 Bathrooms Walk in Pantry Large WIR Separate Laundry

Inclusions

- Insulated exterior Walls
- Thermally broken windows and doors
- Interior Walls, doors, wardrobes and cupboards
- Suspended timber subfloor
- Roof framing timbers
- Sarked timber ceilings
- Full building plans for site-specific consent
- Allowance for preparation site-specific consents

Exclusions

When you order a kitset from Lockwood, there are a number of items that aren't included in the advertised price. These include but are not limited to:

- Any building processes required to construct the home
- Kitchen, bathroom and laundry fixtures
- Drapes and floor coverings
- Under floor and roof insulation
- Sealants/glues, floor nails / product nails, screws
- Electrical fixtures, electrical wiring
- Plumbing fixtures and fittings
- Roofing, gutters and downpipes
- Wet wall linings (Acrylic / Tiles to Bath/Shower and associated finishing materials)
- Site work materials (including concrete, reinforcing, service connections, house piles and bearer kits)
- BCA fees for site consents
- Site specific engineering where required for consent
- Freight

Talk to us for a full list of inclusions and exclusions.

Talk to the Kitset team about a Lifestyler for your site today!

Phone 0508 562 596 | Email info@lockwood.co.nz
lockwoodreadybuilt.co.nz/kitset

