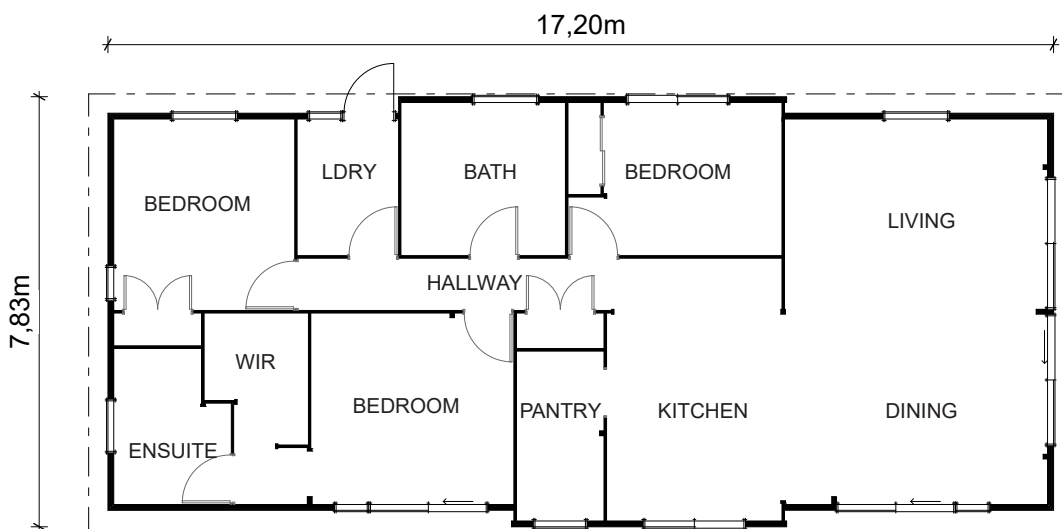




# Seaview Kitset

128m<sup>2</sup>

 3 Bedrooms
  1 Living area
  2 Bathrooms
 Walk in Pantry
 WIR
 Separate Laundry



The Seaview is spacious and bright, with a unique contemporary design featuring three spacious bedrooms, laundry with external access, walk-in kitchen scullery, and generous open plan living, dining, and kitchen areas. The gable pitched roofline provides a great sense of volume, further opening up the living spaces.

The bedrooms in the Seaview are at one end of the home, separating the living and sleeping areas for ultimate peace and quiet. The master bedroom comes complete with a walk in wardrobe and full ensuite.

Talk to the Kitset team about a Seaview for your site today!

Phone 0508 562 596 | Email [info@lockwood.co.nz](mailto:info@lockwood.co.nz)  
[lockwoodreadybuilt.co.nz/kitset](http://lockwoodreadybuilt.co.nz/kitset)





# Seaview Kitset

128m<sup>2</sup>

 3 Bedrooms    1 Living area    2 Bathrooms   Walk in Pantry   WIR   Separate Laundry

## Inclusions

- Exterior Walls, windows and doors
- Interior Walls, doors, wardrobes and cupboards
- Suspended timber subfloor
- Roof framing timbers
- Sarked timber ceilings
- Full building plans for site-specific consent
- Allowance for preparation site-specific consents
- Allowance for freight

## Exclusions

When you order a kitset from Lockwood, there are a number of items that aren't included in the advertised price. These include but are not limited to:

- Any building processes required to construct the home
- Kitchen, bathroom and laundry fixtures
- Drapes and floor coverings
- Under floor and roof insulation
- Sealants/glues, floor nails / product nails, screws
- Electrical fixtures, electrical wiring
- Plumbing fixtures and fittings
- Roofing, gutters and downpipes
- Wet wall linings (Acrylic / Tiles to Bath/Shower and associated finishing materials)
- Site work materials (including concrete, reinforcing, service connections, house piles and bearer kits)
- BCA fees for site consents

Talk to us for a full list of inclusions and exclusions.

Talk to the Kitset team about a Seaview for your site today!

Phone 0508 562 596 | Email [info@lockwood.co.nz](mailto:info@lockwood.co.nz)  
[lockwoodreadybuilt.co.nz/kitset](http://lockwoodreadybuilt.co.nz/kitset)

