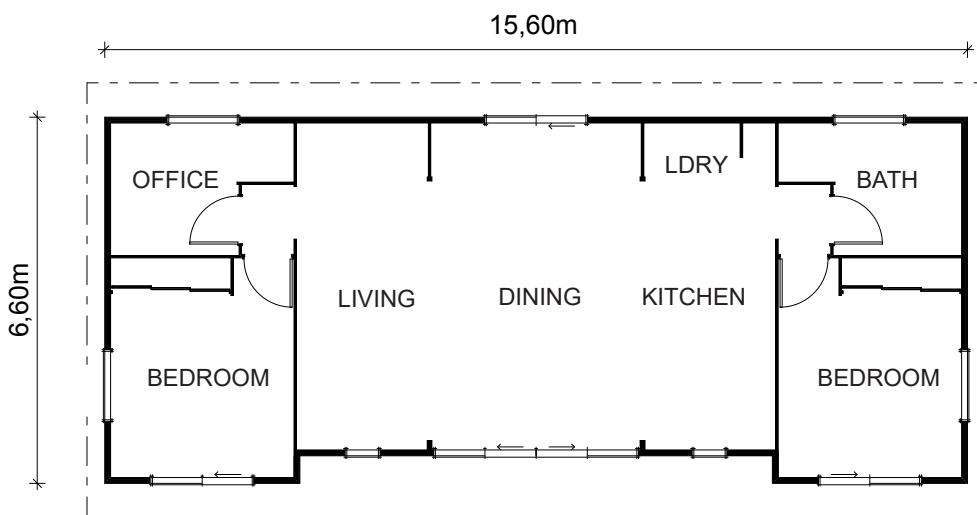




Vacationer Kitset

99m²

 2+ Bedrooms
  1 Living area
  1 Bathrooms



The living area is the central heart of this home with two bedrooms plus an office and one bathroom surrounding the open plan space. Designed using the very latest 'Lifemark' accreditation standards, the compact Vacationer design has space in all the right places. The smaller office or third bedroom can be changed to a second bathroom, and the laundry area can be adapted to create a scullery, which would make an ideal holiday or downsized retirement home.

Talk to the Kitset team about a Vacationer for your site today!

Phone 0508 562 596 | Email info@lockwood.co.nz
lockwoodreadybuilt.co.nz/kitset





Vacationer Kitset

99m²

 2+ Bedrooms

 1 Living area

 1 Bathrooms

Inclusions

- Exterior Walls, windows and doors
- Interior Walls, doors, wardrobes and cupboards
- Suspended timber subfloor
- Roof framing timbers
- Sarked timber ceilings
- Full building plans for site-specific consent
- Allowance for preparation site-specific consents
- Allowance for freight

Exclusions

When you order a kitset from Lockwood, there are a number of items that aren't included in the advertised price. These include but are not limited to:

- Any building processes required to construct the home
- Kitchen, bathroom and laundry fixtures
- Drapes and floor coverings
- Under floor and roof insulation
- Sealants/glues, floor nails / product nails, screws
- Electrical fixtures, electrical wiring
- Plumbing fixtures and fittings
- Roofing, gutters and downpipes
- Wet wall linings (Acrylic / Tiles to Bath/Shower and associated finishing materials)
- Site work materials (including concrete, reinforcing, service connections, house piles and bearer kits)
- BCA fees for site consents

Talk to us for a full list of inclusions and exclusions.

Talk to the Kitset team about a Vacationer for your site today!

Phone 0508 562 596 | Email info@lockwood.co.nz
lockwoodreadybuilt.co.nz/kitset

ReadyBuilt
by  **LOCKWOOD**