



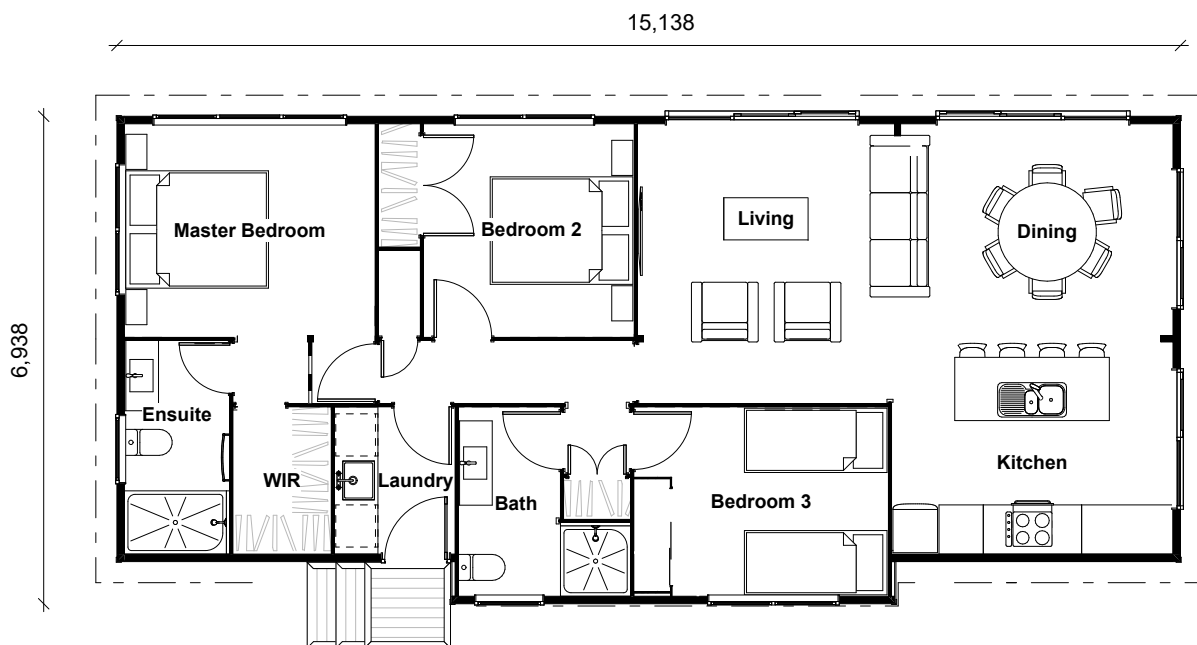
Nevis Show Home 100m²

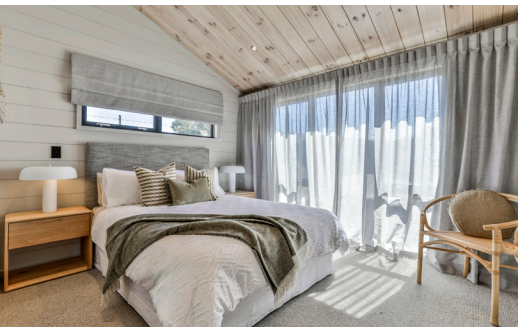
 3 Bedrooms

 1 Living area

 2 Bathrooms

 Separate Laundry





Nevis Show Home 100m²

 3 Bedrooms

 1 Living area

 2 Bathrooms

 Separate Laundry

The Nevis, with its modest yet comfortable 100m² footprint, exudes spaciousness. High raking ceilings amplify the open-plan kitchen, dining, and living area, generously lit by strategically placed skylights.

This Lockwood home offers diverse finishes, combining aluminum and VG pine on the exterior. Inside, a predominantly blonded finish is complemented by painted and tiled feature walls, igniting creativity.

With a colour palette inspired by the central lakes region, earthy tones and slate greys create a serene ambiance. Modern elements like the Cocoon fireplace and Linear Wooden Pendant infuse contemporary charm.

This three-bedroom home includes a lavish ensuite, walk-in robe, and a stylish, functional laundry. Precision and quality shine in this show home with elegant, marbled stone benchtops, high-quality colored cabinetry, and high-end finishes throughout.

For those seeking inspiration on their home building journey, the Nevis is a must-see. Visit today and let your imagination soar.

Nevis show home – 3 Wolter Crescent, Cromwell
Open Monday – Friday 9am – 4pm
Saturday and Sunday by Appointment

Talk to Lightning Homes about building with Lockwood today!
Phone 0800 4 LOCKWOOD (0800 456 259)
Email enquiry@lightning.co.nz | lockwood.co.nz

 **lightning**
CONSTRUCTION

 **LOCKWOOD**
Designed for good