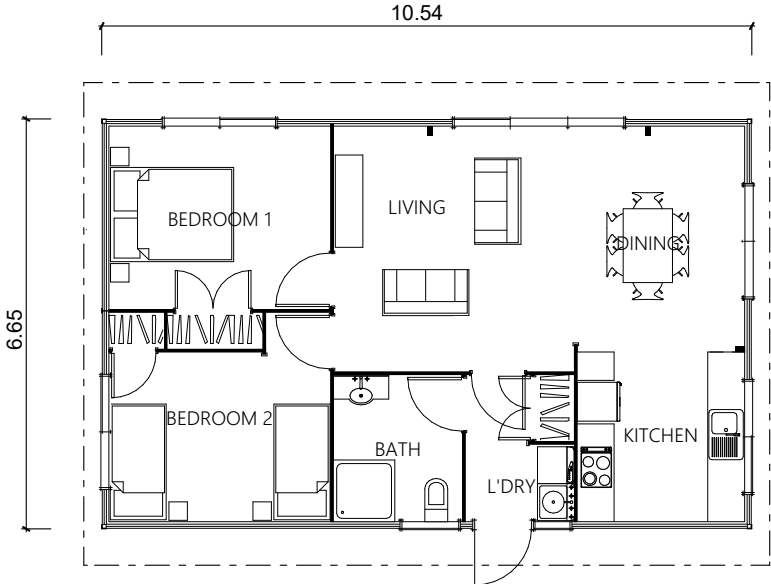




\$301,300
incl GST
Save \$20,700!

Lakeview 241

70m²  2 Bedrooms  1 Living area  1 Bathroom Laundry



Limited time stock offer

Don't pay ~~\$322,000~~ Now Only \$301,300

Fast track your project with these pre-manufactured components, ready to be built in our shelter now! This is a limited-time opportunity you won't want to miss, only one available in the North Island at this special price!

Talk to the ReadyBuilt team about the Lakeview today!
Phone 0508 562 596 | Email info@lockwood.co.nz
www.lockwoodreadybuilt.co.nz



This Lakeview includes

- Kitchen cabinetry
- Bathroom fittings plumbed to floor
- Smeg appliances including cooktop, oven, rangehood & dishwasher
- Pre consent plans (required for site specific consent)
- Double glazed thermally broken windows and doors
- R2.1 wall insulation
- R5.0 Ceiling insulation
- R3.2 underfloor insulation
- LED lighting
- High quality fitted carpet and vinyl
- Internal and external painting and finishing



Pre-manufactured Colours

| Exterior | Model | Colour |
|----------------------------------|-----------------------|------------------------------|
| Lockwood Aluminium Exterior Wall | 107mm Aluminium | Misty White (Lockwood White) |
| Lockwood Timber Exterior Wall | 107mm VG Pine | N/A |
| Corner Profiles | Aluminium | Protecture Black Flat |
| Joinery | Southern 41 | Protecture Black Flat |
| Sliding Door Hardware | D Handle | Black |
| Front Door | Southern 41 | Protecture Black Flat |
| Entry Door Hardware | Pinnacle | Black |
| Glass/Tint | Clear float / Obscure | Planitherm Ultra N |
| Flashing Base Board | Aluminium | Misty White (Lockwood White) |
| Interior Door Handles | Schlage Medio | Angelo - Stainless Steel |

Exclusions

Decking, window coverings, site works, service connections and local authority consents, water heating, heating and transport are not included in the pricing for your ReadyBuilt home.

Although these items are excluded from standard supply, they can be quoted and supplied on request.

We are also able to assist in obtaining site consents and engineering if required. Contact us for a full list of specifications and how we can assist.

Talk to the ReadyBuilt team about the Lakeview today!

Phone 0508 562 596 | Email info@lockwood.co.nz

www.lockwoodreadybuilt.co.nz

ReadyBuilt
by  **LOCKWOOD**